

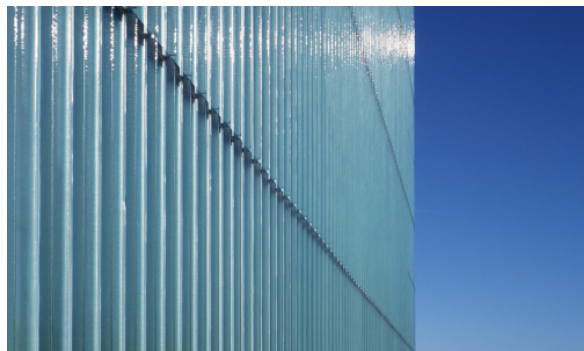
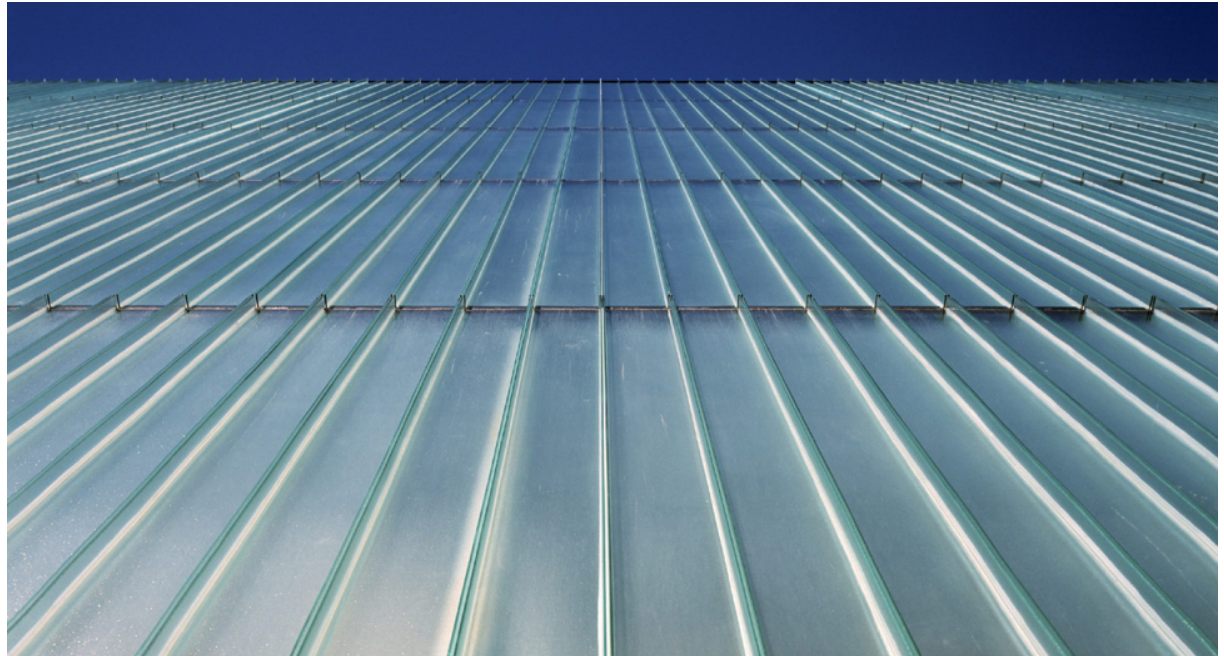
## ERCO Industrial Glazing Facade

Lüdenscheid, 2001  
Design/Object

The industrial glass facade ERCO has the advantage of reducing the visibility of the supporting structure to a minimum and maximizes the effect of light and the light incidence.

The frameless glass panels are held from behind by by Structural-Sealant-Glazing-Bonding.

The translucent glass industrial design reveals the inner workings of their buildings.



## ERCO Industrial Glazing Facade

Lüdenscheid, 2001  
Design/Object

Technical details:

Typology: Design/Object  
Service phases (HOAI): 1-5